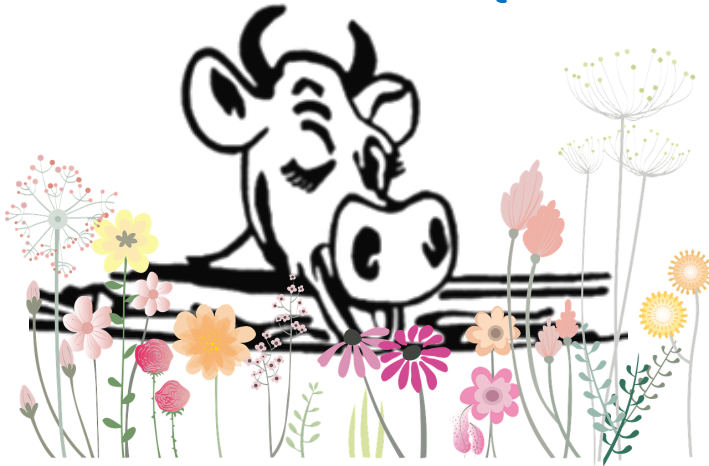


SPOONER MILLS

Cadott • Gilman • Thorp

News & Notes

May 2025



To:

www.cloverleaffarmsupply.com



Lic Tubs

Using Lic tubs for the summer is an easy way to supplement your cattle and other animals. We carry Form-A-Lic's All-Purpose tub and Dry Cow tub. Both are 250# – bigger than most. They also contain all natural proteins, have no urea, and contain fiber digesters. The All-Purpose tubs also contain diatomaceous earth for good digestive health. Both contain about 500 feedings. The Dry Cow tub contains more vitamins and trace minerals to prepare your cows for their next lactation. Both are very economical and easy to feed. Just feed with forages, salt, and water. Call and order today!

Hydro-Lac and TMR Stabilizer

—Book by May 16th for \$1 off per bag—

-Hydro-Lac-

Hydro-Lac provides essential nutrients to rehydrate ruminates during periods of stress. This product provides electrolytes, energy, Vitamin C, betaine, thiamine, and Vitamins A, D, and E. This is the only patented feed product of its kind, research and field-proven. Hydro-Lac provides the nutrients to maintain intercellular fluid balance. It helps the animals handle stress, like heat stress. Feed $\frac{1}{4}$ to $\frac{1}{2}$ pound per head per day depending on how hot and humid the conditions are.

-TMR Stabilizer-

TMR Stabilizer is a unique blend of four organic acids formulated to control fungal & secondary microbial growth and extend the bunk life of TMRs. TMR Stabilizer will reduce heating and nutrient degradation in TMRs by retarding mold and yeast growth. Use TMR Stabilizer to minimize reduced feed intake during summer weather by maintaining cooler, fresher feed. Mix in 2 to 6 pounds per ton of TMR Stabilizer depending on feedstuffs and severity of hot weather.



Along with warmer weather, we also get those annoying flies. Spooner Mills carry a complete line of products to make life easier for you and your cows such as:

**Fly Bombs, Mr. Sticky Fly tapes,
Pour-ons, Sprays, and
Clarify feed additive**



Cloverleaf Farm Supply

(715) 289-4366 / 800-241-4366

127 Elm Street / PO Box 63

Cadott, WI 54727

Gilman Feed Co

(715) 447-8243

400 N Railroad / PO Box 147

Gilman, WI 54433

Spooner Mills of Thorp

(715) 669-5644 / (715) 669-3500

213 E Soo / PO Box 598

Thorp, WI 54771

Email

spoonermills@gmail.com

Feel free to email us concerning any information you see in News & Notes

From the Agronomy Desk...

Planting season is right around the corner if mother nature cooperates. Hopefully we'll be getting in the fields by the time you are reading this. The rain and cooler-than-average temperatures during the end of April have made it feel like planting season is far away.

If you are planning on doing a pre-emerge spray program on corn or soybeans, please call us the day before you plant so we can get it scheduled. We know pre-emerge works better than post-emerge. Pre-emerge spray offers better crop safety and allows the crop to emerge without any competition. As the saying goes, "Start clean, stay clean."

Seed delivery is in full swing. We have a good supply of early day corn seed along with fertilizers and chemicals. **If you need fertilizer spread or in a pull spreader, please give us at least a day's notice.**

Test plots will again be planted around the area. Location and information will be coming in June.

The long workdays have begun and we look forward to working with you to get the crops off to a good start. Work safely and enjoy the spring.

Your Spooner Mills Agronomy Team,

Tom, Paul, Cory, and Terry

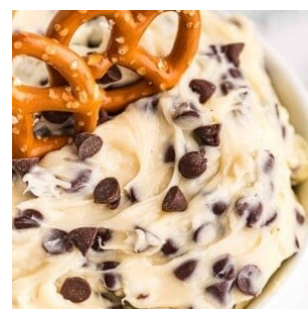
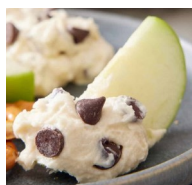


"With ClariFly Larvicide, the fly stops at the pupal stage. With a focus on making animals including cattle, swine, and equine more comfortable and more productive, ClariFly Larvicide works as a feed-through to help prevent the emergence of adult house, stable, face, and horn flies by stunting the growth of the fly. Using ClariFly Larvicide is an easy-to-use, cost-effective method of fly control that can help contribute to a boost in animal productivity that can result in a boost in profits." (centralflycontrol.com)

ClariFly is available in our PrimeLife milk replacer, calf starter, and some calf growers. We can also mix it into your custom mixes. Ask us how to incorporate ClariFly into your feed.



Chocolate Chip Cookie Dough Dip



Ingredients:

1/2 Cup Unsalted Butter

8 oz Cream Cheese

1/4 Cup Powdered Sugar

1/4 Cup Brown Sugar

1 Teaspoon Pure Vanilla Extract

1/4 Teaspoon Kosher Salt

Directions:

- 1— In bowl or stand mixer - beat together the butter, cream cheese, sugars, vanilla, and salt until smooth.
- 2— Fold in the chocolate chips until evenly distributed in the dip
- 3— Serve with dippers like pretzels, apples, graham crackers, or waffle cones